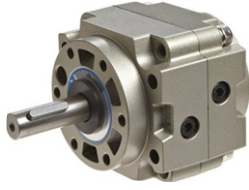


Cilindro Rotativo de Palheta Simples - Série CRS



CRS Ø10,15,20,
30 e 40mm



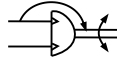
CRS Ø50,80 e
100mm.

CRS [] - [] - []

Modelo

Tamanho (mm)	
10	50*
15	63*
20	80*
30	100*
40	

*Corpo Quadrado.



Angulo de Rotação

90	90°
180	180°
270	270°

Exemplo: **CRS40-270**
CRS15-180-U
CRS63-90-M

Opção

---	Simple	
M	Magnético	
U	*Magnético e Ajuste de Ângulo	

*Disponível somente até o tamanho de 40.

Características Técnica Tamanho 10,15,20,30,40mm

Modelo (tamanho)	CRS10	CRS15	CRS20	CRS30	CRS40
Operação	Dupla Ação				
Fluido	Ar (sem lubrificação)				
Torque (Nm)	0.14	0.38	0.78	1.8	3.8
Rosca de Alimentação	M5				
Rotação	90°, 180°, 270°				
Pressão de Trabalho(Bar)	1.5 ~ 7				
Temperatura de Trabalho (C°)	5 ~ 60°				
Energia cinética admissível (J)	0.0015	0.001	0.003	0.02	0.04

Sensor Magnético Aplicável

SM-07 [] - []



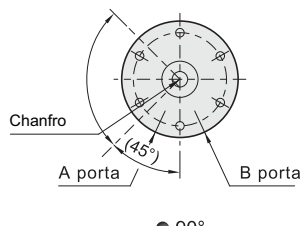
Sinal	
R	Reed (2 fios)
P	PNP (2 fios)
N	NPN (3 fios)

Saída	
2M	Cabo 2 metros
M8	Conector M8

Exemplo: **SM-07R-2M**
SM-07P-M8

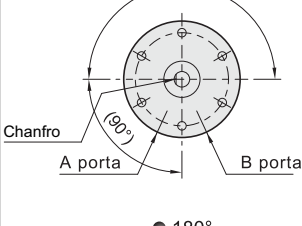
Ângulo de Rotação

■ Ângulo de Rotação 90°^{+4°}₀



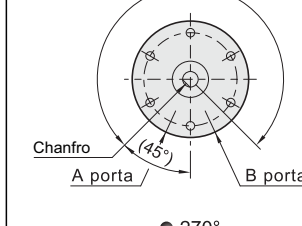
● 90°

■ Ângulo de Rotação 180°^{+4°}₀



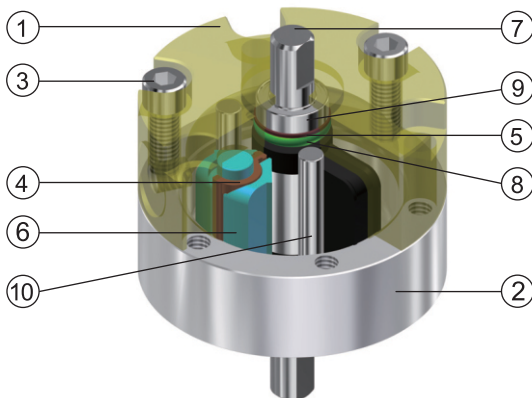
● 180°

■ Ângulo de Rotação 270°^{+4°}₀

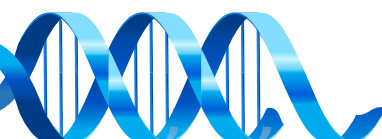


● 270°

Construção



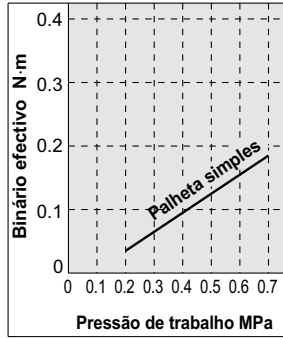
	Descrição	Material	Qty
1	Tampa Traseira	Liga de Alumínio Anodizado	1
2	Tampa Dianteira	Liga de Alumínio Anodizado	1
3	Parafuso	Aço Carbono	3
4	Vedação Especial	NBR	1
5	Junta	NBR	2
6	Batente	Resina	1
7	Eixo	Aço Inoxidável	1
8	O-ring	PU	2
9	Rolamento	Rolamento de esfera	2
10	Pino	Eixo de Aço	2



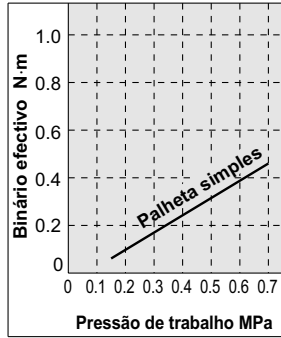
Cilindro Rotativo de Palheta Simples - Série CRS10/15/20/30 e 40.

Força Efetiva

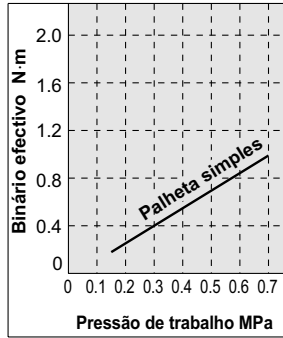
CRS10



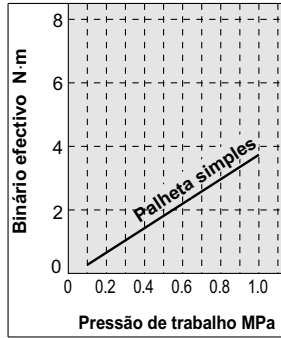
CRS15



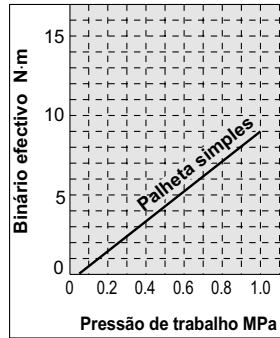
CRS20



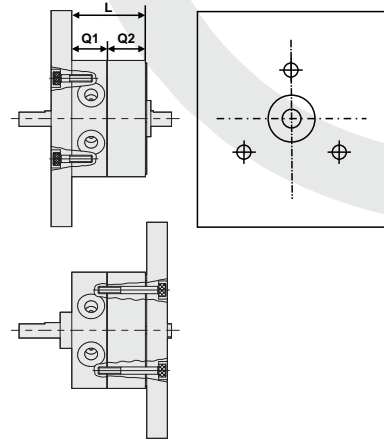
CRS30



CRS40



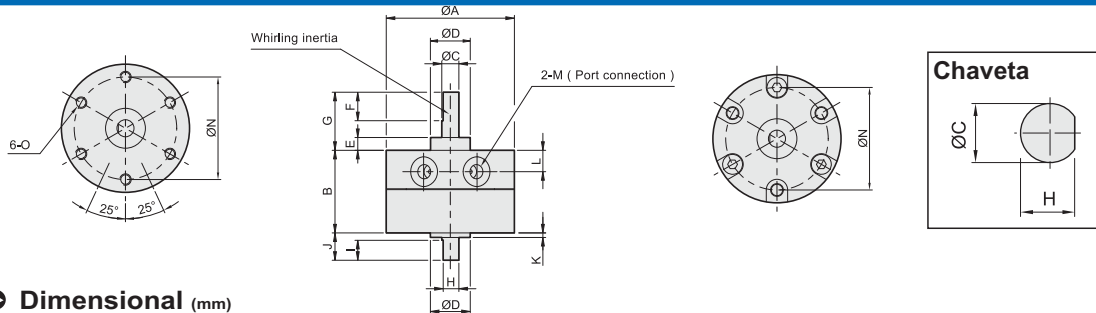
Montagem directa do corpo



A dimensão "L" dos actuadores é fornecida na tabela abaixo para os parafusos da tampa sextavados de norma JIS. Se utilizar este tipo de parafusos as cabeças vão encaixar no orifício de montagem.

Tipo	L	Parafuso
CRS10	11.5	M2.5
CRS15	16	M2.5
CRS20	24.5	M3
CRS30	34.5	M4
CRS40	39.5	M4

Dimensional CRS

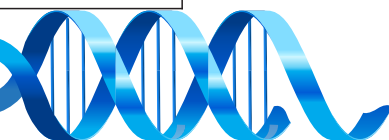


► Dimensional (mm)

Modelo	A	B	C	D	E	F	G	H	I	J	K	L	M	N	O
CRS10-90															
CRS10-180	30	17	4	9	3	9	14	3.5	5	8	1	4.2	M5x0.8p	24	M3x0.5p
CRS10-270															
CRS15-90															
CRS15-180	35	20.1	5	12	4	10	18	4.5	6	9	1.5	5	M5x0.8p	29	M3x0.5p
CRS15-270															
CRS20-90															
CRS20-180	44	29.1	6	14	4.5	10	20.3	5.5	7	9.6	1.6	8.5	M5x0.8p	36	M4x0.7p
CRS20-270															
CRS30-90															
CRS30-180	51	40	8	16	5	12	22	7.5	8	13	2	11	M5x0.8p	43	M5x0.8p
CRS30-270															
CRS40-90															
CRS40-180	64	45	10	25	6.5	22	30	9	9	15	4.5	9.5	M5x0.8p	56	M5x0.8p
CRS40-270															

► Peso

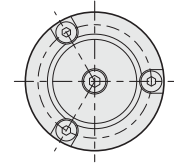
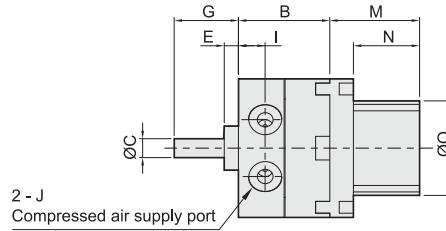
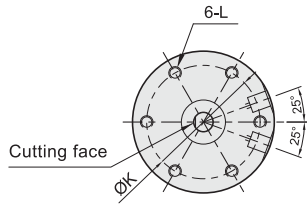
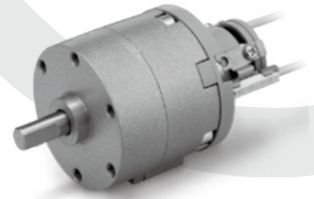
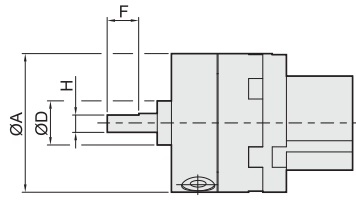
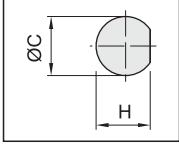
Modelo	CRS10	CRS15	CRS20	CRS30	CRS40
Peso	28g	48g	112g	200g	342g



Cilindro Rotativo de Palheta Simples - Série CRS

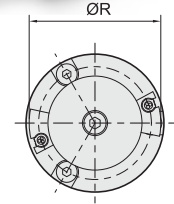
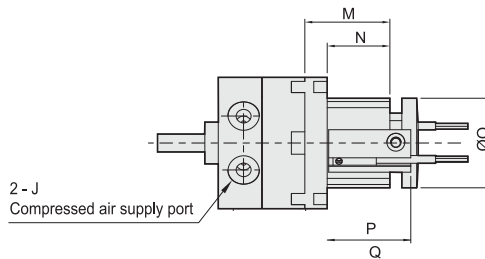
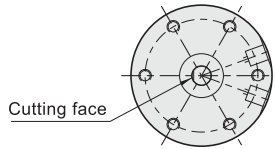
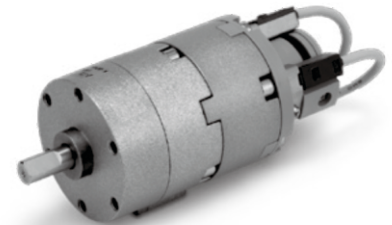
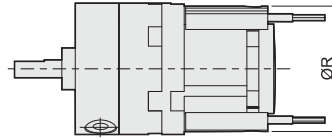
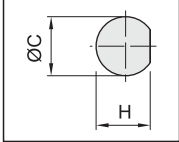
CRS_M - com Magnético

Chaveta



CRS_U - com Magnético e Ajuste de Ângulo

Chaveta

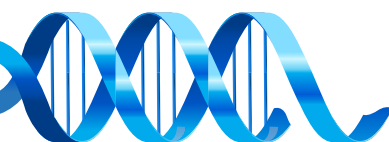


Dimensional (mm)

Modelo	A	B	C	D	E	F	G	H	I	J	K	L	M	N	O	P	Q	R
CRS10-90																		
CRS10-180	30	17	4	9	3	9	14	3.5	4.2	M5x0.8p	24	3x0.5p	24	18	18	23.3	24	29
CRS10-270																		
CRS15-90																		
CRS15-180	35	0.	5	12	4	10	18	4.5	5	M5x0.8p	29	3x0.5p	28	22	24	27.3	29.5	34
CRS15-270																		
CRS20-90																		
CRS20-180	44	9.	6	14	4.5	10	20.3	5.5	8.5	M5x0.8p	36	4x0.7p	28.	21	30	28	30.5	42
CRS20-270																		
CRS30-90																		
CRS30-180	51	40	8	16	5	12	22	7.5	11	M5x0.8p	43	5x0.8p	32.	24	34	30.8	34	47
CRS30-270																		
CRS40-90																		
CRS40-180	64	45	10	25	6.5	22	30	—	9.5	M5x0.8p	56	5x0.8p	34.	26	34	33	36	47
CRS40-270																		

Peso

Modelo	CRS10	CRS15	CRS20	CRS30	CRS40
Peso	78g	116g	240g	390g	604g

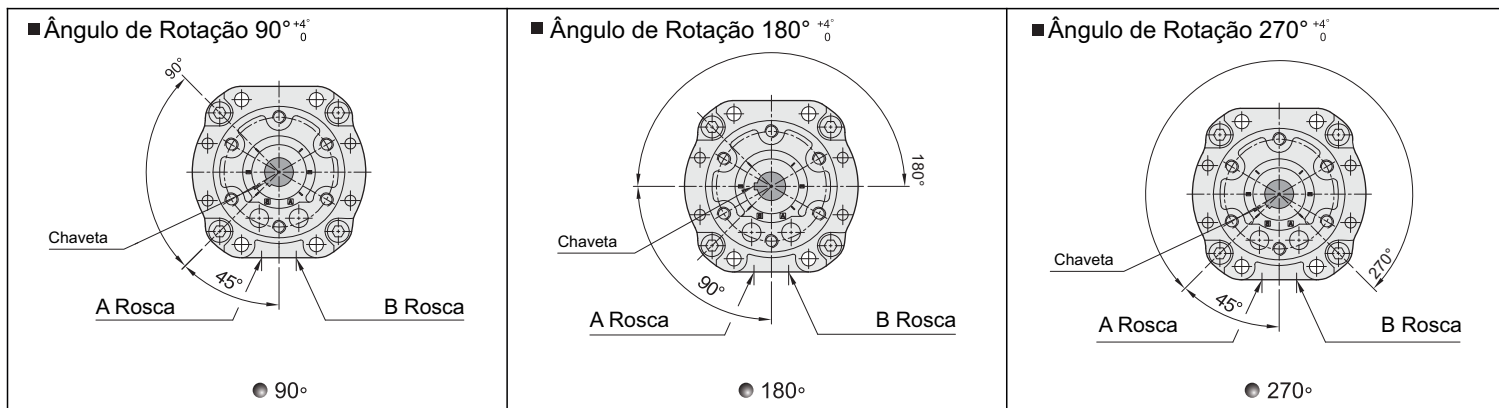


Cilindro Rotativo de Palheta Simples - Série CRS50/63/80 e 100.

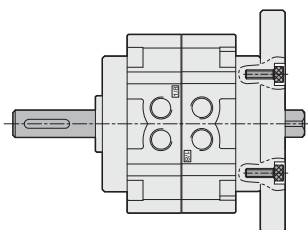
Características Técnica Tamanho 50/63/80 e 100.

Modelo (tamanho)	CRS50	CRS63	CRS80	CRS100
Operação	Dupla Ação			
Fluido	Ar (sem lubrificação)			
Torque (Nm)	5	10	18	35
Rosca de Alimentação	RC1/8"		RC1/4"	
Rotação	90°, 180°, 270°			
Pressão de Trabalho(Bar)	1.5 ~ 7			
Temperatura de Trabalho (C°)	5 ~ 60°			
Energia cinética admissível (J)	0.082	0.12	0.39	0.6

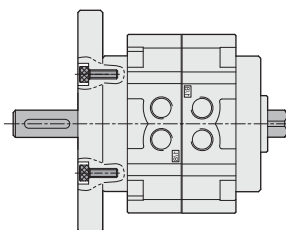
Ângulo de Rotação



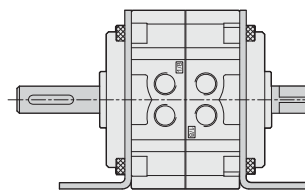
Tipo de Montagem



● Montagem Traseira



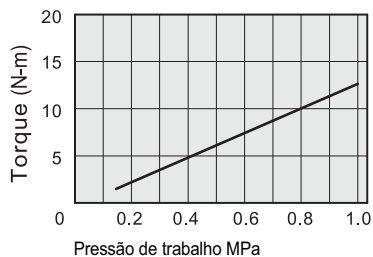
● Montagem Frontal



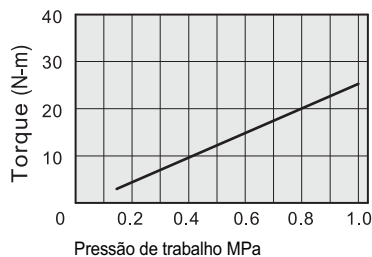
● Montagem por Pés

Força Efetiva

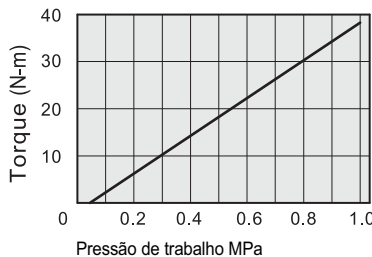
CRS50



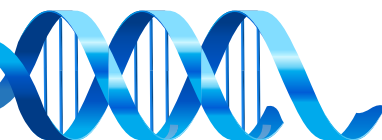
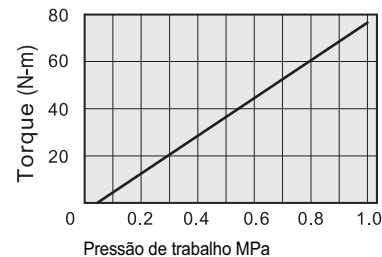
CRS63

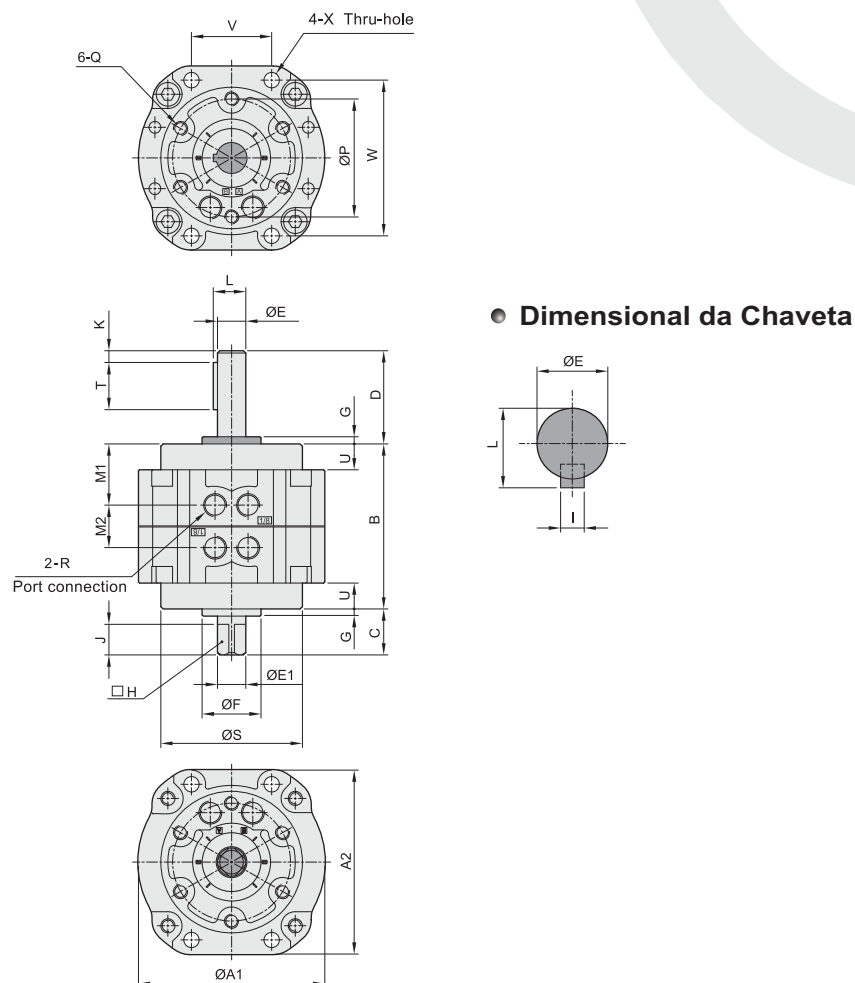


CRS80



CRS100

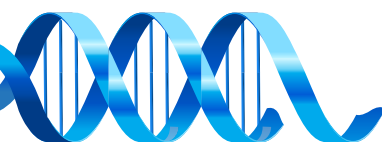


Cilindro Rotativo de Palheta Simples - Série CRS50/63/80 e 100.
Dimensional CRS Básico Tamanho 50/63/80 e 100.

Dimensional (mm)

Modelo	A1	A2	B	C	D	E	F	G	H	I	J	K	L	M1	M2	P	Q	R	S	T	U	V	W	ØX
CRS50-90																								
CRS50-180	79	78	70	19.5	39.5	12	25	3	10	4	13	5	13.5	26	18.2	50	M6X1.0P	RC1/8"	60	20	11	34	66	6.5
CRS50-270																								
CRS63-90																								
CRS63-180	98	98	80	21	45	15	28	3	12	5	14	5	17	28.9	22.2	60	M8X1.25P	RC1/8"	75	25	14	39	83	9
CRS63-270																								
CRS80-90																								
CRS80-180	110	110	90	23.5	53.5	17	30	3	13	5	16	5	19	30	30.2	70	M8X1.25P	RC1/4"	88	41	15	48	94	9
CRS80-270																								
CRS100-90																								
CRS100-180	140	140	103	30	65	25	45	4	19	7	22	5	28	35.4	32.2	80	M10X1.5P	RC1/4"	108	40	11.5	60	120	11
CRS100-270																								

Peso

Modelo	CRS50	CRS63	CRS80	CRS100
Peso	760g	1.29kg	1.92kg	3.56kg



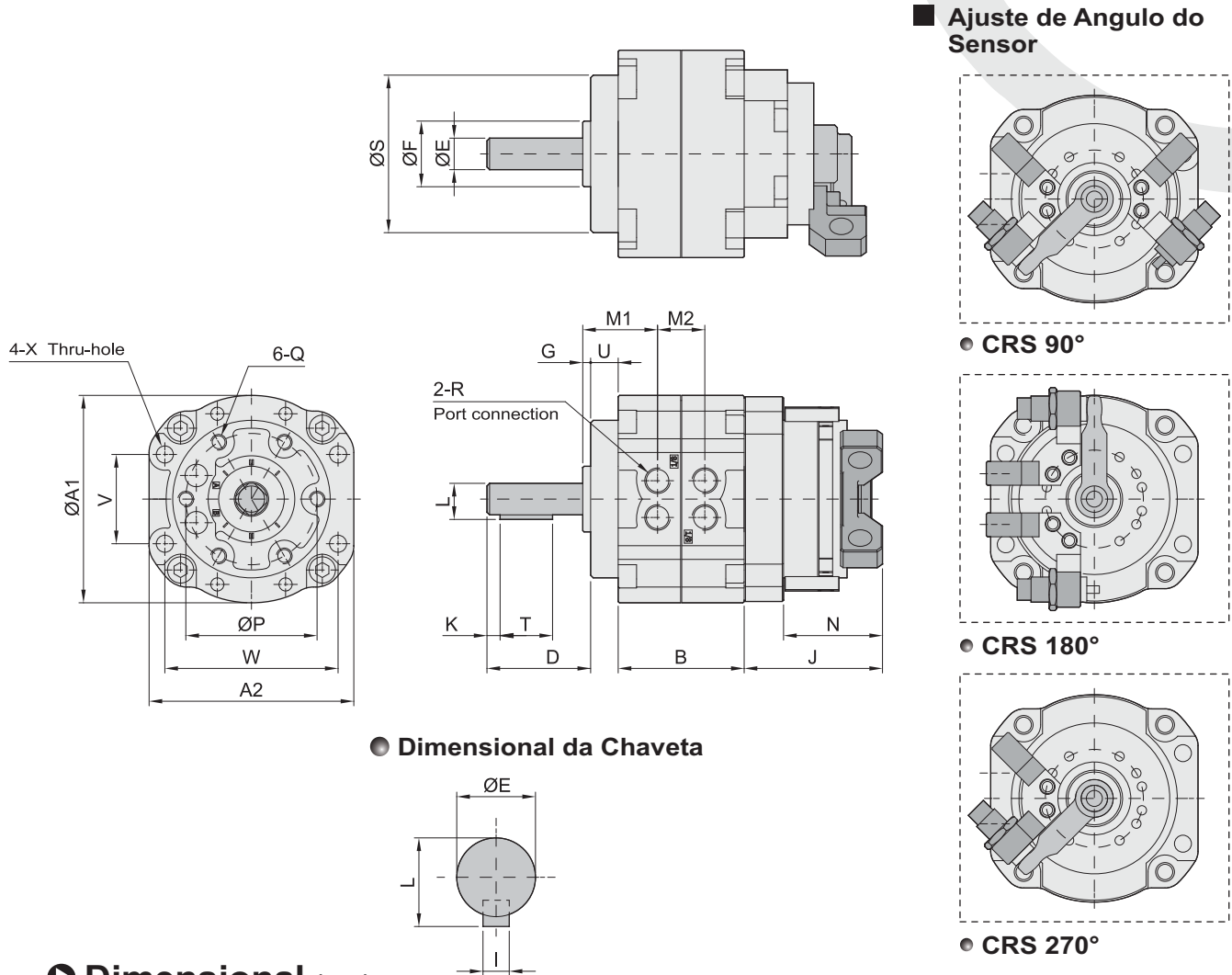


GHPC[®]

Tecnologia em Produtos Pneumáticos

Cilindro Rotativo de Palheta Simples - Série CRS

Dimensional CRS Magnético com Ajuste de Ângulo, Tamanho 50/63/80 e 100.



Dimensional (mm)

Modelo	A1	A2	B	D	E	F	G	I	J	K	L	M1	M2	N	P	Q	R	S	T	U	V	W	ØX
CRS50-90																							
CRS50-180	79	78	48	50.5	12	25	3	4	52.7	5	13.5	29	18	37.7	50	M6x1.0P	RC 1/8"	60	20	11	34	66	6.5
CRS50-270																							
CRS63-90																							
CRS63-180	98	98	52	59	15	28	3	5	56.4	5	17	31.9	22.2	37.7	60	M8x1.25P	RC 1/8"	75	25	14	39	83	9
CRS63-270																							
CRS80-90																							
CRS80-180	110	110	60	68.5	17	30	3	5	58.9	5	19	33	30	39.2	70	M8x1.25P	RC 1/8"	88	36	15	48	94	9
CRS80-270																							
CRS100-90																							
CRS100-180	140	140	80	76.5	25	45	4	7	62.9	5	28	39.4	32.2	39.2	90	M10x1.5P	RC 1/4"	108	40	11.5	60	120	11
CRS100-270																							

Peso

Modelo	CRS50	CRS63	CRS80	CRS100
Peso	1,1kg	1.5kg	2,3kg	3,9kg

